



COLLECTION JARS & SUCTION LINERS



SUCTION

COLLECTION JARS
SUCTION LINERS
ACCESSORIES



**TECHNOLOGIE
MEDICALE**

TM COLLECTION JARS

The collection jars are used to collect liquids or mucus resulting from medical suction. They can be used in conjunction with any suction device.

Main technical features:

Active medical device of class I.

In compliance with the EN ISO 10079-3: 2009 standard.

- Collection jars made of polysulfone, unbreakable and autoclavable up to 134°C.
Our collection jars are also available in polycarbonate on demand only. In this case they are autoclavable up to 121°C only.
- Covers fitted with an anti-overflow safety device.
- Covers fitted with inlet nipples marked PATIENT/VACUUM for easy-use.

Many versions available:

- Available in:
 - 1 L long with screw-fit plastic lid
 - 1 L short with pressure-fit lid with silicone ring
 - 2 L with screw-fit metal lid
 - with pressure-fit plastic lid
 - with pressure-fit lid with silicone ring
 - 4 L with pressure-fit plastic lid
- For 1 L short and 2 L jars: an integrated moulded hanger enables to hang the jar directly onto the rail clamp or onto the wall bracket without using a basket.

- Weight and dimensions:

Collection jars	Height	Diameter	Weight
1L long with screw-fit plastic lid	250 mm	110 mm	450 g
1L short with pressure-fit lid with silicone ring	170 mm	130 mm	520 g
2L with pressure-fit plastic lid	310 mm	130 mm	600 g
2L with pressure-fit lid with silicone ring	310 mm	130 mm	650 g
2L with screw-fit metal lid	310 mm	130 mm	700 g
4L with pressure-fit plastic lid	340 mm	170 mm	1150 g

Use and cleaning:

Disassemble all the parts of the jar and the cover.

Lay the parts under a decontaminating or pre-disinfecting solution.

Clean, rinse thoroughly, lay under clear water during 1 min. and dry.

Sterilize or disinfect.

Reassemble all the parts together.

Caution!

Repeated cleanings in washing-machine alter the rigidity of the jars.

The compatibility of decontaminating products with polysulfone and polycarbonate must be checked carefully, sterilizing times must be scrupulously respected and a perfect drying is essential to maintain the quality of the jars.



B01

1L long collection jar, polysulfone, with screw-fit plastic lid.

Ref. 15021



B02

1L short collection jar, polysulfone, with moulded hanger and pressure-fit lid with silicone ring.

Ref. 15048



B03

2 L collection jar with moulded hanger and pressure-fit lid with silicone ring.

Ref. 15057: Polysulfone
Ref. 15060: Polycarbonate



B04

2 L collection jar with moulded hanger and pressure-fit plastic lid.

Ref. 15034: Polysulfone
Ref. 15035: Polycarbonate



B05

2 L collection jar with moulded hanger and screw-fit metal lid.

Ref. 15052: Polysulfone
Ref. 15037: Polycarbonate



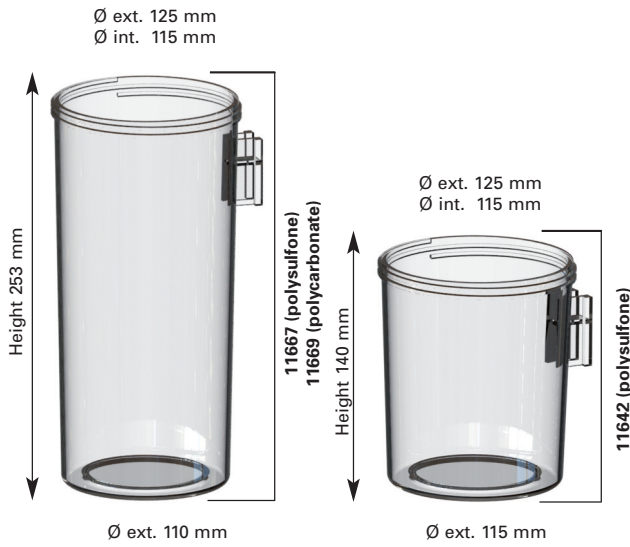
B06

4 L collection jar with pressure-fit plastic lid.

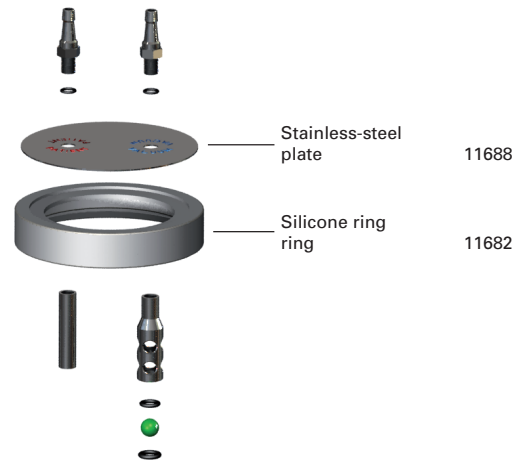
Ref. 15026: Polysulfone
Ref. 15027: Polycarbonate

SUCTION

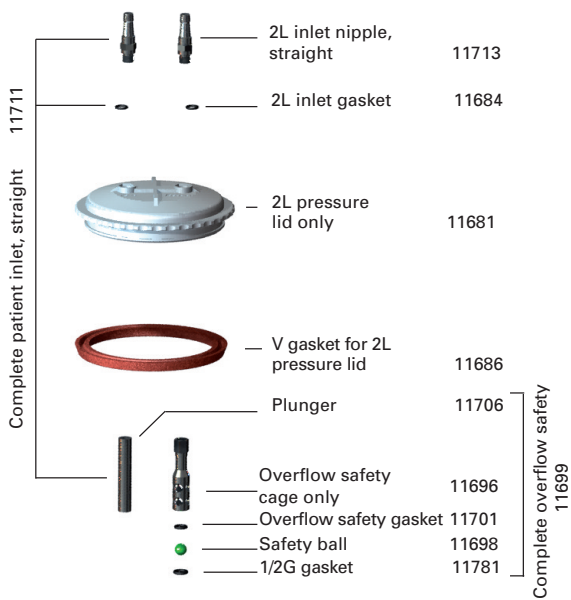
COLLECTION JARS SUCTION LINERS



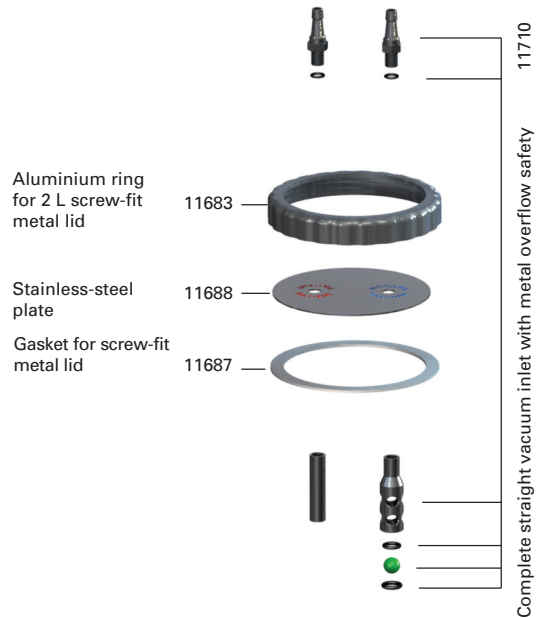
2 L and 1 L short collection jars with moulded hanger.



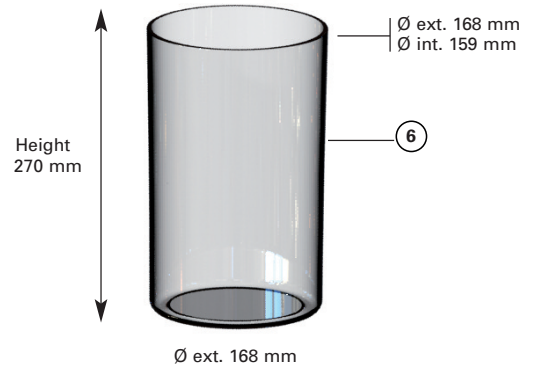
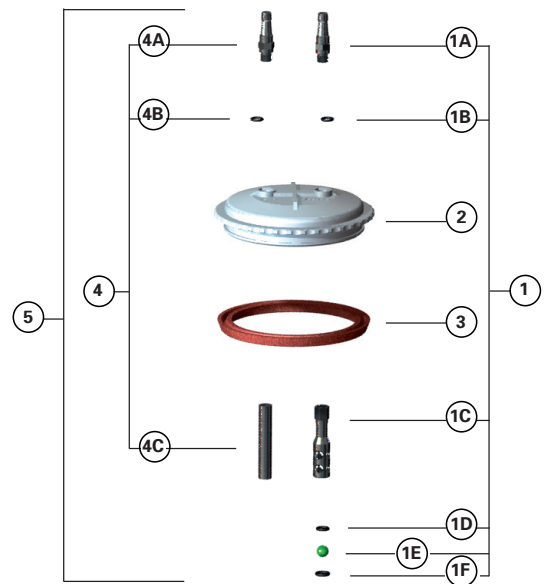
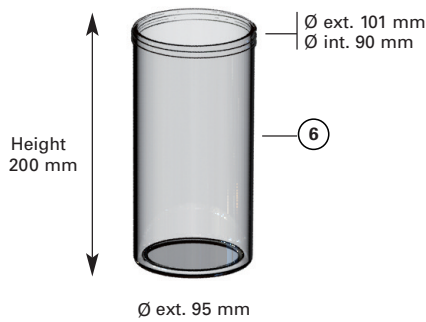
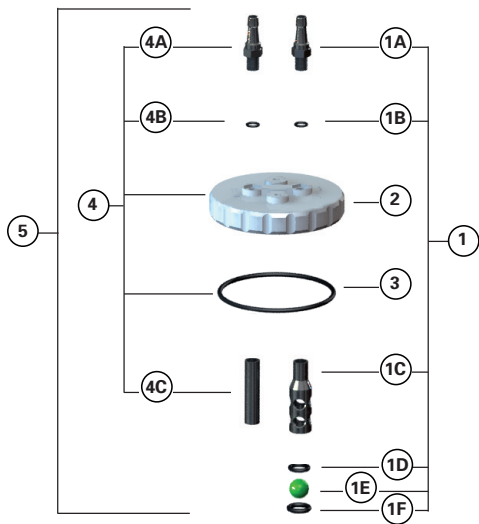
Pressure lid with silicone ring for 2 L and 1 L short collection jars with moulded hanger.
Ref. 11634



Pressure plastic lid for 2 L collection jars with moulded hanger.
Ref. 11679



Screw-fit metal lid for 2 L and 1 L short collection jars with moulded hanger.
Ref. 11637



1L long collection jar, polysulfone, with screw-fit plastic lid.

4 L collection jar with pressure-fit plastic lid.

Reference	Description
1	11710 STRAIGHT VACUUM INLET Complete straight vacuum inlet for 1L jar
1A/4A	11713 Straight inlet nipple
1B/4B	11684 Inlet gasket
1C	11696 Overflow safety cage only
1D	11701 Overflow safety gasket
1E	11698 Safety ball
1F	11781 1/2G gasket
2	11646 Screw-fit plastic lid only
3	11632 Gasket for 1L long jar
4	11711 Complete patient inlet, straight for 1L jar
4C	11706 Plunger for 1L jar
5	11648 Screw-fit plastic lid complete for 1L jar
6	11647 1L long jar only, polysulfone

Reference	Description
1	11703 STRAIGHT VACUUM INLET Complete straight vacuum inlet for 4L jar
1A/4A	11702 Straight inlet nipple
1B/4B	11684 Inlet gasket
1C	11695 Overflow safety cage only
1D	11701 Overflow safety gasket
1E	11698 Safety ball
1F	11781 1/2G gasket
2	11665 Pressure-fit plastic lid only for 4L jar
3	11630 Gasket for 4L jar
4	11704 Complete patient inlet, straight for 4L jar
4C	11705 Plunger for 4L jar
5	11662 Pressure-fit plastic lid complete for 4L jar
6	11663 4L jar only, polysulfone 11664 4L jar only, polycarbonate

SINGLE-USE™ SUCTION LINERS

Main technical features:

Active medical device of class I.

In compliance with the EN ISO 10079-3: 2009 standard.

- Single-use product.
- Cone-shaped for an easy-positioning inside the jar.
- Covers fitted with a safety valve to stop the suction as soon as the liner is full.
- **2 available systems:**
 - **Mechanical safety valve**
 - **Safety valve with a hydrophobic and self-sealing filter.** This filter is automatically obstructed as soon as the liquid contacts it thus ensuring an immediate closing of the valve.
- Ecological: PVC free.
- Perfect asepsis and total protection of the nursing staff during manipulations. The TM suction liners can be safely taken out of care area after use.

- Packaging: individually packed in a thermo-sealed plastic bag. Carton of 50 suction liners.
Minimum order = 50 suction liners.

Many versions available:

- Useful capacities: 0.8 L and 1.4 L
- Can be fitted in our 1L and 2L collection jars, re-usable but non-autoclavable CRISTAL plastic with integrated moulded hanger.
- Weight and dimensions:

Suction liners	Height	Diameter	Weight
0.8 L	130 mm	130 mm	106 g
1.4 L	252 mm	130 mm	116 g



B07

1.4 L single-use TM suction liner with mechanical safety valve.

Ref. 15040



B08

0.8 L single-use TM suction liner with mechanical safety valve.

Ref. 15038



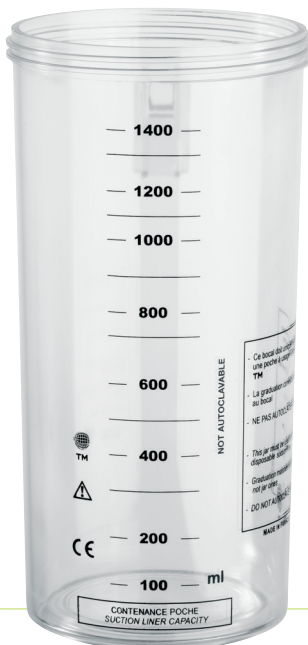
B09

1.4 L single-use TM suction liner with hydrophobic and self-sealing filter.
Ref. 15044



B10

0.8 L single-use TM suction liner with hydrophobic and self-sealing filter.
Ref. 15050



B11

CRISTAL plastic collection jar for 1.4 L TM suction liner, with moulded hanger, re-usable but non autoclavable.
Ref. 11671



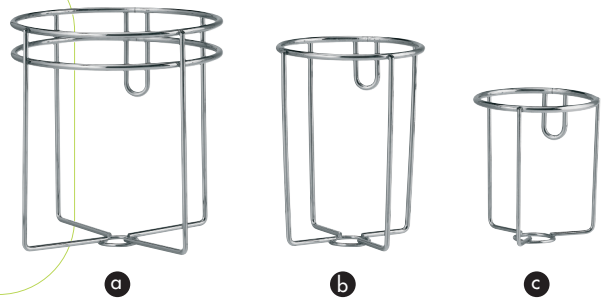
B12

CRISTAL plastic collection jar for 0.8 L TM suction liner, with moulded hanger, re-usable but non autoclavable.
Ref. 11640

B13

Metal basket for wall or rail mounting

- ⓐ Ref. 10315 : for 4 L jar.
- ⓑ Ref. 10317 : for 2 L jar.
- ⓒ Ref. 10311 : for 1 L long jar.



B14

TM universal rail clamp in polycarbonate

Resistant to shocks and in compliance with the NF EN ISO 19054: 2006 European standard (30 mm spread).

The TM universal rail clamp in polycarbonate is used to hang any TECHNOLOGIE MEDICALE device onto a rail system. All devices in compliance with the NF EN 128 European standard (30 mm width) can also be used with the TM universal rail clamp provided the small blue adaptor located in the bottom part of the clamp is taken out by sliding it upwards.

Ref. 11949

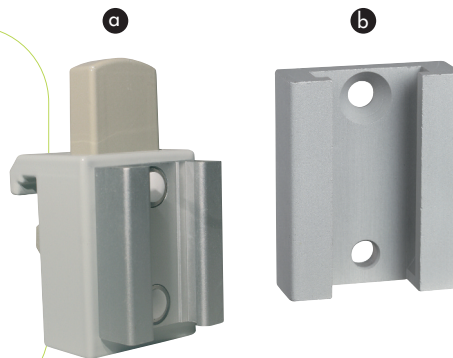
B15

- ⓐ **Metal rail clamp**, rilsan-coated aluminium, with support bracket, for rail mounting.

Ref. 15657

- ⓑ **Wall bracket**, aluminium, for wall mounting.

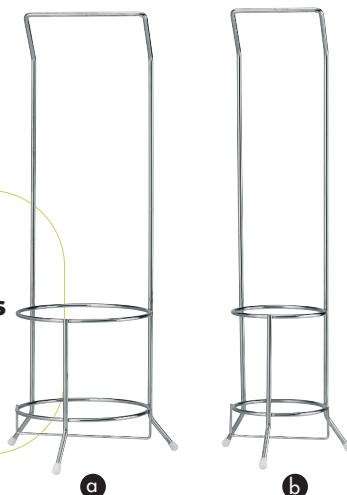
Ref. 10313



B16

Floor stands for collection jars

- ⓐ Ref. 10321 : for 4 L jar.
- ⓑ Ref. 10319 : for 2 L jar.

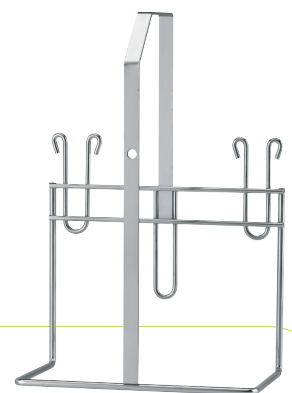


B17

Kit for 2x 2 L jars

Can be put on the floor or can be fixed into the wall or onto a rail.

Ref. 10326



VACUUM-STOP AND CONTROL VALVES

System used in the context of medical suction to stop manually the suction of liquids. To be connected to a catheter on one end and to a silicone suction hose on the other end (the suction hose itself being connected to a collection jar).

B18

Vacuum-stop

To get suction just put your thumb on the central hole.

- Single-use device
- Model with a membrane
- Available for both adults and children
- Fixed integrated clamp
- 100% controlled
- Reliable
- Ergonomic
- Noiseless
- Delivered non sterile*

Minimum order: 50 pieces

Vacuum-stop with membrane and integrated clamp

a Ref. 16612: adult

b Ref. 16615: paediatric



B19

Vacuum-control (patented)

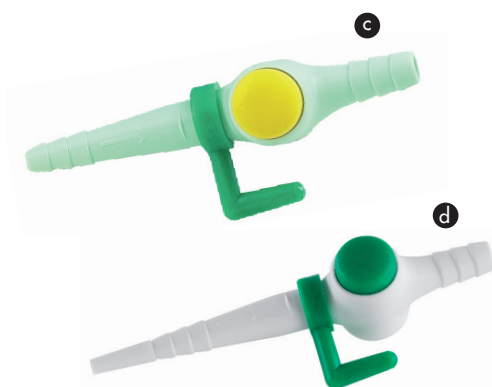
To get suction just push on the button with your thumb.

- Single-use device
 - Piston-type model
 - Progressive system to better control the suction
 - Available for both adults and children
 - With or without swiveling clamp
 - 100% controlled
 - Reliable
 - Ergonomic
 - Noiseless
 - Delivered non sterile*
- Minimum order: 50 pieces

Vacuum-control with swiveling clamp

c Ref. 16621 : adult

d Ref. 16622 : paediatric



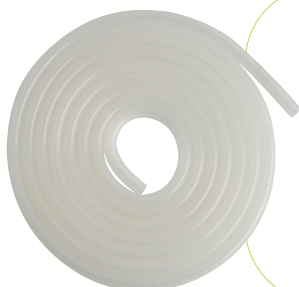
* Sterilization upon request and for big quantities only.

B20

Single-use suction tip for drainage

Minimum order: 50 pieces.

Ref. 16607



B21

Silicone suction hose, autoclavable

Packaging: Roll of 25 meters

Minimum order: 25 meters

Ref. 16916: 7x13 mm for 1 L and 2 L collection jars.

Ref. 16917: 8x14 mm for 4 L collection jars.



Aussi disponible



Distribué par

SUCTION
COLLECTION JARS
SUCTION LINERS
ACCESSORIES



TECHNOLOGIE
MEDICALE

101, rue Vaillant Couturier B.P. 46 F-93136 NOISY-LE-SEC CEDEX France
Tel: 33 (0)1 48 45 58 95 - Fax: 33 (0)1 49 42 90 21 - 33 (0)1 48 45 29 00 - info@technologiemedicale.com
www.technologiemedicale.com