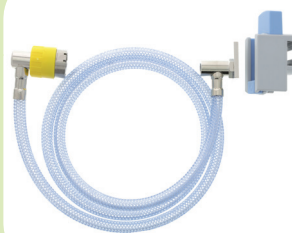
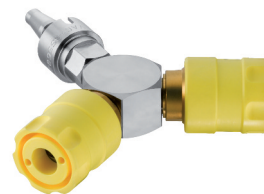


ACCESSORIES






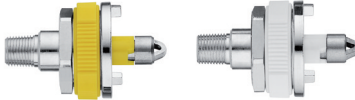



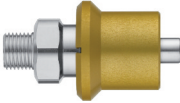


SUCTION ACCESSORIES



**TECHNOLOGIE
MÉDICALE**



DIRECT PROBES

Standards	Direct probes	References and descriptions
AFNOR (French)		Ref. 10146: vacuum direct probe 12x100 M, yellow Ref. 10152: vacuum direct probe 1/8NPT M long, yellow
BS (British)		Ref. 10179: vacuum direct probe 1/4G F Ref. 10180: vacuum direct probe 1/8NPT M long
DIN (German)		Ref. 10058: vacuum direct probe 1/4G F Ref. 10059: vacuum direct probe 1/8NPT M long
US OHMEDA (American)		Ref. 10069: vacuum direct probe 1/8NPT M, yellow Ref. 10068: vacuum direct probe 1/8NPT M, white
NORDIC (Scandinavian)		Ref. 10157: vacuum direct probe 1/8G M Ref. 10158: vacuum direct probe 1/8NPT M long
UNI (Italian)		Ref. 10208: vacuum direct probe 1/4G F
FRO (Italian)		Ref. 10193: vacuum direct probe 1/4G F
CARBUROS (Spanish)		Ref. 10200: vacuum direct probe 1/4G F
CZECH (Czech)		Ref. 10164: vacuum direct probe 1/4G F
DISS (American)		Ref. 22014 : vacuum direct probe 1/8G M, yellow Ref. 17138 : vacuum direct probe 1/8G M, white








* Other standards available upon request.

REMOTE PROBES

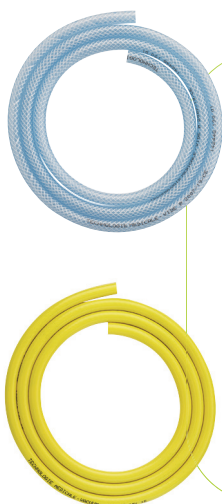
Standards	Remote probes	References and descriptions
AFNOR (French)		Ref. 10115: vacuum remote probe straight , yellow Ref. 10129: vacuum remote probe angled , yellow Ref. 10105: vacuum remote probe for 9/16" hose angled, yellow
BS (British)		Ref. 10187: vacuum remote probe straight
DIN (German)		Ref. 10050: vacuum remote probe angled, yellow Ref. 17439: vacuum remote probe angled, black (neutral)
US OHMEDA (American)		Ref. 10075: vacuum remote probe straight, yellow Ref. 10074: vacuum remote probe straight, white
NORDIC (Scandinavian)		Ref. 10154: vacuum remote probe straight
UNI (Italian)		Ref. 10212: vacuum remote probe angled
DISS (American)		Ref. 22015: vacuum remote probe straight, yellow Ref. 19708: vacuum remote probe straight, white

COMPLETE RAIL MOUNTING SYSTEMS

Delivered with a crimped remote probe, 1.5 m transparent hose, a metal sliding piece and a polycarbonate TM universal rail clamp*.

Standards	Complete rail mounting systems	References and descriptions
AFNOR (French)		Ref. 16683: vacuum rail mounting system
BS (British)		Ref. 16696: vacuum rail mounting system
DIN (German)		Ref. 16680: vacuum rail mounting system Ref. 17117: vacuum rail mounting system with black hose and remote probe (neutral)
US OHMEDA (American)		Ref. 16702: vacuum rail mounting system, yellow Ref. 16701: vacuum rail mounting system, white
NORDIC (Scandinavian)		Ref. 16707: vacuum rail mounting system
UNI (Italian)		Ref. 16869: vacuum rail mounting system
DISS (American)		Ref. 22017: vacuum rail mounting system, yellow Ref. 22016: vacuum rail mounting system, white

* Available with other hose colours
or other hose lengths or with a metal clamp upon request only.



ASP01-E

PVC hoses

Diameter: 6 x 12 mm.
Packaging: roll of 40 m.

Ref. 14962: transparent hose

Ref. 14969: yellow hose*

Ref. 14971: black hose

* Roll of 25 m only



ASP02-E

Direct vacuum valve with 100 ml safety jar

To be used to make a non-regulated suction.
2 positions only: OPEN or CLOSED.

Delivered with a 100 ml polycarbonate safety jar, autoclavable up to 134°C and unbreakable, fitted with an anti-overflow safety device and a single-use antibacterial filter up-front.

The direct vacuum valve with safety jar ensures the protection of the wall outlets against any liquids' overflow and thus protects the vacuum pipeline network against contamination risks.

Ref. 11419: Direct vacuum valve with 100 ml safety jar, mounted with AFNOR* direct probe.

* also available in BS standard upon request.



ASP03-E

AFNOR quick-release connector 3/8G M

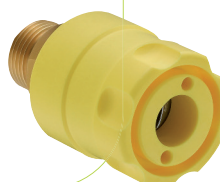
In compliance with the NF S 90-116: 1988 standard.

Ref. 10032

BS quick-release connector 3/8G M

In compliance with the BS 5682: 1998 standard.

Ref. 10037



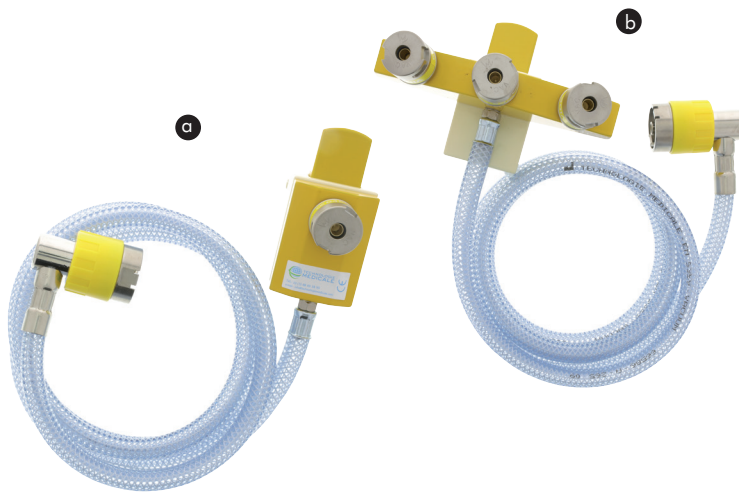
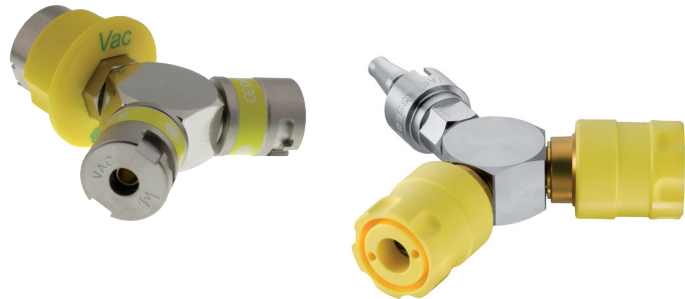
Y-CONNECTORS SINGLE, DOUBLE AND TRIPLE CONNECTORS

To be used to supply various devices with vacuum from only one vacuum source:

ASP04-E

Ref. 10021: Y-connector mounted with AFNOR direct probe

Ref. 10027: Y-connector mounted with BS direct probe



ASP05-E

Single, double and triple connectors

Delivered with a complete rail mounting system with a crimped AFNOR* angled remote probe, 1.5 m transparent hose and a metal universal clamp.

- a** Single vacuum connector
Ref. 15523
- Double vacuum connector
Ref. 15527
- b** Triple vacuum connector
Ref. 15538

* also available in BS standard upon request.

ASP06-E

Hosepipes for vacuum. Contractual lifetime: 10 years.

Active medical device of class IIa.

In compliance with the EN ISO 5359 standard

The hosepipes are used as extensions to supply any device or machine with vacuum coming from a standardized outlet.

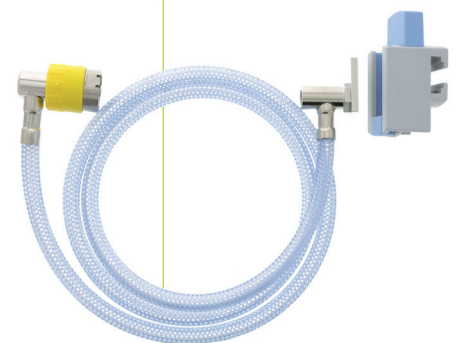
- Delivered with one crimped AFNOR angled remote probe and one crimped AFNOR straight remote probe.
- Time limit indicator on the angled probe; date easier to read.

Ref. 17041: AFNOR vacuum hosepipe, 1.5 m

Ref. 17043: AFNOR vacuum hosepipe, 3 m

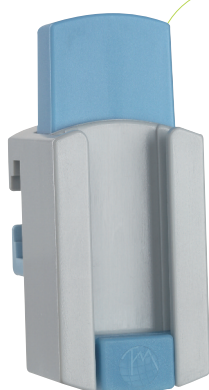
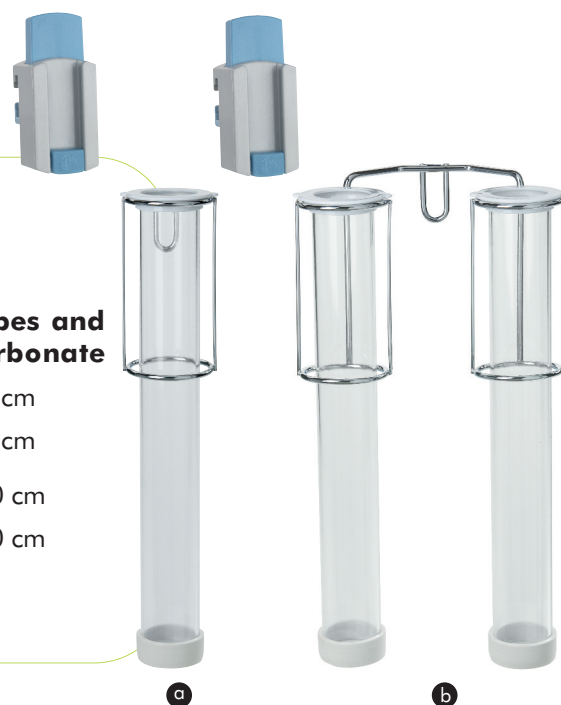
Ref. 17047: AFNOR vacuum hosepipe, 5 m

Other lengths and configurations available upon request.



ASP07-E**Catheter holders with polycarbonate tubes and with TM universal rail clamp in polycarbonate**

- a Ref. 16595: Complete catheter holder 1 tube 40 cm
- Ref. 16596: Complete catheter holder 1 tube 50 cm
- b Ref. 16597: Complete catheter holder 2 tubes 40 cm
- Ref. 16598: Complete catheter holder 2 tubes 50 cm

**ASP08-E****TM universal rail clamp in polycarbonate**

Resistant to shocks and in compliance with the NF EN ISO 19054: 2006 European standard (30 mm spread).

The TM universal rail clamp in polycarbonate is used to hang any TECHNOLOGIE MEDICALE device onto a rail system. All devices in compliance with the NF EN 128 European standard (30 mm width) can also be used with the TM universal rail clamp provided the small blue adaptor located in the bottom part of the clamp is taken out by sliding it upwards.

Ref. 11949

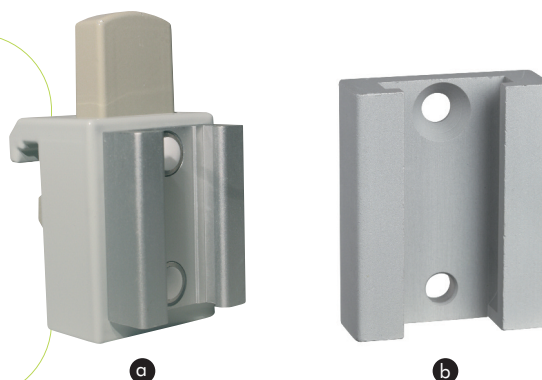
ASP09-E

Metal rail clamp, rilsan-coated aluminium, with support bracket, for rail mounting.

- a Ref. 15657

Wall bracket, aluminium, for wall mounting.

- b Ref. 10313



VACUUM-STOP AND CONTROL VALVES

System used in the context of medical suction to stop manually the suction of liquids.
To be connected to a catheter on one end and to a silicone suction hose on the other end (the suction hose itself being connected to a collection jar).

ASP10-E

Vacuum-stop

To get suction just put your thumb on the central hole.

- Single-use device
- Model with a membrane
- Available for both adults and children
- Fixed integrated clamp
- 100% controlled
- Reliable
- Ergonomic
- Noiseless
- Delivered non sterile*

Minimum order: 50 pieces

Vacuum-stop with membrane and integrated clamp

- a** Ref. 16612: adult
- b** Ref. 16615: paediatric



ASP11-E

Vacuum-control (patented)

To get suction just push on the button with your thumb.

- Single-use device
- Piston-type model
- Progressive system to better control the suction
- Available for both adults and children
- With or without swiveling clamp
- 100% controlled
- Reliable
- Ergonomic
- Noiseless
- Delivered non sterile*

Minimum order: 50 pieces

Vacuum-control with swiveling clamp

- c** Ref. 16621: adult
- d** Ref. 16622: paediatric



* Sterilization upon request and for big quantities only.

ASP12-E

Single-use suction tip for drainage

Minimum order: 50 pieces.

Ref. 16607



ASP13-E

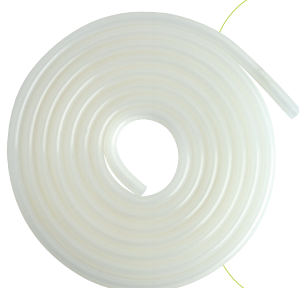
Silicone suction hose, autoclavable

Packaging: Roll of 25 meters

Minimum order: 25 meters

Ref. 16916: 7x13 mm for 1 L and 2 L collection jars.

Ref. 16917: 8x14 mm for 4 L collection jars.





Also Available



Distributed by

**SUCTION
ACCESSORIES**



101, rue Vaillant Couturier B.P. 46 F-93136 NOISY-LE-SEC CEDEX France
Tel: 33 (0)1 48 45 58 95 - Fax: 33 (0)1 49 42 90 21 - 33 (0)1 48 45 29 00 - info@technologiemedicale.com
www.technologiemedicale.com